

SPARES & ACCESSORIES

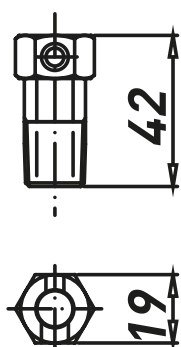
Wall mounting brackets

| CODE | TYPE |
|---------------|--|
| B080200100035 | MOUNTING BRACKETS FOR EJB-2/3/3A + SCREWS (STF-2/3/3A) |
| B080200100011 | MOUNTING BRACKETS FOR EJB-4/5 + SCREWS (STF-4/5) |
| B080200100030 | MOUNTING BRACKETS FOR EJB-6 + SCREWS (STF-6) |
| B080200100032 | MOUNTING BRACKETS FOR EJB-8 + SCREWS (STF-8) |
| B080200100012 | MOUNTING BRACKETS FOR EJB-9 + SCREWS (STF-9) |
| B080200100013 | MOUNTING BRACKETS FOR EJB-10 + SCREWS (STF-10) |
| B080200100014 | MOUNTING BRACKETS FOR EJB-11 + SCREWS (STF-11) |
| B080200100015 | MOUNTING BRACKETS FOR EJB-12 + SCREWS (STF-12) |
| B080200100016 | MOUNTING BRACKETS FOR EJB-13 + SCREWS (STF-13) |

Available upon request AISI 316 L made version

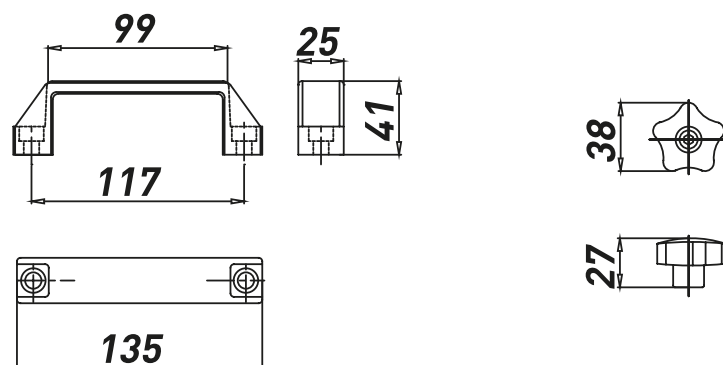
Drain/Breather valve

| CODE | TYPE |
|---------------|-------------|
| B080909000001 | ECR 1 VALVE |



Door handles

| CODE | TYPE |
|---------------|--|
| B0A0100049000 | HANDLE FOR EJB (FROM 8 TO 14) + SCREWS |
| B0A0100048000 | KNOB FOR EJB (UP TO 6) + SCREWS |

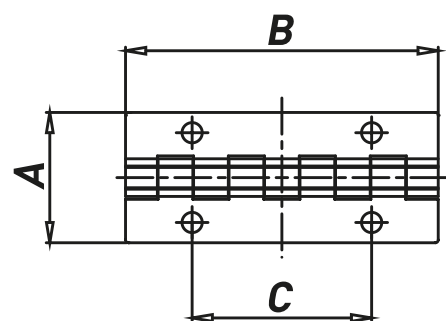


Hinges (for aluminium EJB Series)

| CODE | TYPE |
|---------------|-------------------------------------|
| B080300100003 | AISI 316 L HINGES 56X38MM + SCREWS |
| B080300100001 | AISI 316 L HINGES 60X45MM + SCREWS |
| B080300100002 | AISI 316 L HINGES 108X45MM + SCREWS |

Selection table

| HINGES L=56X38MM | HINGES L=60X45MM | HINGES L=108X45MM |
|------------------|------------------|-------------------|
| EJB-2 | EJB-6 | EJB-12 |
| EJB-3 | EJB-8 | EJB-13 |
| EJB-3A | EJB-9 | EJB-13A |
| EJB-4 | EJB-10 | EJB-13 XL |
| EJB-5 | EJB-11 | EJB-14 |



Windows

Our windows may have multiple shape options and different sizes according to customers' requirements. Our technical department will support you in choosing the suitable window to meet your specifications within the technical limits allowed by the certificate.

Standard shape: Rectangular

Standard dimensions (mm): 45x70; 100x170; 100x270; 110x290

Customization is available upon request